



**EASY
BUTLER®**
THE SERVICE TROLLEY



THE EYE EATS WITH

Easy Butler® enhances service and presentation by offering directly at the table of the guest or at the event

Easy Butler® is a novelty of its kind and makes the hearts of all restaurateurs' hearts beat faster.

Easy Butler® wireless cooling with eutectic plates, mobile and flexible both indoors and outdoors



www.easy-butler.de

INNOVATIVE SERVICE TROLLEY " EASY BUTLER"

Easy Butler® model Bea & Jass for antipasti, pâtisserie and desserts of all kinds

BIG EDITION version with **three** delivery shelves.

Article no. 472018

MINI EDITION version with **two** delivery shelves.

Article no. 472019

- easy-running swivel castors (braked)
- robust and hygienic design
- frame and body made of stainless steel (1.430.1)
- all-round railing in stainless steel (1.430.1)
- front pane, revolving door and sliding lid in toughened safety glass (ESG)
- sliding lid for convenient food serving can be used as a gueridon.
- two or three refrigerated display shelves made of brushed stainless steel (1.430.1)
- The bottom of the delivery tray is made of sandwich construction for stiffening.
- The adhesive sealant used is a 1K silicone with special suitability in the food and drinking water sector.
- with removable buffet plates: laminate 8 mm thick, rust look, break-proof, scratch-resistant, dishwasher-safe, antistatic.
- for self-sufficient and silent cooling with eutectic plates (storage refrigeration)
- including 4 eutectic plates -16°c per shelf
- one uncooled shelf as practical storage space for plates, napkins, and accessories
- Supplied mounted
- LED lighting optionally available



Outer dimensions	640 mm x 1100 mm x 1100 mm (WxHxD)
Inner dimensions	495 mm x 890 mm x 900 mm (WxHxD)
Empty weight	75 Kg



Outer dimensions	640 mm x 880 mm x 1100 mm (WxHxD)
Inner dimensions	495 mm x 670 mm x 900 mm (WxHxD)
Empty weight	65 Kg

THE EASY BUTLER BRING'S

Easy Butler® MINI EDITION model Kasimero
for ice cream & sorbet

Version with **one** display level

Article no. 472021



- easy running swivel castors (braked)
- robust and hygienic design
- frame and body made of stainless steel (1.430.1)
- all-round railing in stainless steel (1.430.1)
- all-round protection for the corpus, easy handling.
- front pane, revolving door and sliding lid in toughened safety glass (ESG)
- sliding lid for comfortable food serving can be used as gueridon
- including a special thermo box with removable insert tray in white and stainless steel frame for GN Ice cream containers 3x1/4 and 2x1/9
- including 1 round stainless steel container for Ice-cream portioning
- wireless cooling with eutectic plates (storage cold)
- including 4 special eutectic plates -16°C
- one uncooled display as a practical storage space for plates, napkins, Ice-cream cups, bowls and accessories
- including cladding of the special thermobox with stainless steel.
- The smooth surface is suitable for advertising purposes or design foil
- including an uncooled shelf made of stainless steel for removable thermobox
- Supplied mounted
- LED lighting optionally available

Outer dimensions 640 mm x 880 mm x 1100 mm (BxHxT)
Inner dimensions 495 mm x 670 mm x 900 mm (BxHxT)
Empty weight 65 Kg

Easy Butler® BIG EDITION model VIP
for champagne, prosecco, wines & co

Version with **two** display levels

Article no. 472022



- easy running swivel castors (braked)
- robust and hygienic design
- frame and body made of stainless steel (1.430.1)
- all-round railing in stainless steel (1.430.1)
- all-round protection for the corpus, easy handling.
- sliding lid in toughened safety glass (ESG)
- sliding lid for comfortable beverage serving can be used as gueridon
- The bottom of the delivery tray, is of sandwich construction for stiffening purposes.
- The adhesive sealant used is a 1K silicone with special suitability in the food and drinking water sector.
- including large champagne cooler Ø 40 cm H 28 cm made of stainless steel
- including shelf wine presenter made of brushed stainless steel
- including 9 wine bottle holders made of stainless steel
- including 1 eutectic plate -16°C
- Supplied mounted
- LED lighting optionally available

Outer dimensions 640 mm x 1100 mm x 1100 mm (BxHxT)
Inner dimensions 495 mm x 890 mm x 900 mm (BxHxT)
Empty weight 55 Kg

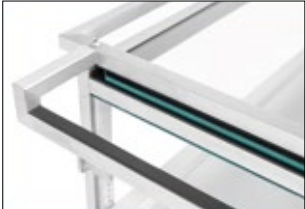
WIRELESS COLD WITH "EUTECTIC PLATES".

The practical service trolley "Easy Butler" brings delicious food or ice cream fresh and cold to the table – the cooling is simple, wireless and efficient. Eutectic plates guarantee here with correct handling always the right temperature for all kinds of food as well as ice cream. Eutectic plates are frozen before used and then release the storage cold into the environment – use is therefore noiseless, particularly flexible and ecological.

- The plates retain their shape when frozen – be sure to follow the freezing instructions.
- The plates must not be washed in the dishwasher.
- To achieve the desired cooling temperatures, the plates must be frozen at different temperatures (partly at -30 °C for ice cream) for 24 hours.



YOUR PRODUCT ADVANTAGES - EXTENSIVE ACCESSORIES



circumferential railing in stainless steel 1.4301 for easy and comfortable handling



practical sliding lid for quick and easy food remove from above; open as additional work space Gueridon usable



stainless steel - delivery trays individual height adjustable per space required for content and service



are all there and quickly ready to hand - unrefrigerated per delivery as a practical storage space for tableware and accessories



optional: noiseless and efficient - cordless and cooling display tubs with eutectic plates



stainless steel (1.4031) wine bottle presenter with stainless steel bottle holder



mobile everywhere whether indoor or outdoor - maneuverable silent swivel castors



OPTIONAL COMPLETELY INDIVIDUAL

set - advertising foil with your logo or slogan on the glass as well as a colored powder coating of the high-grade steel elements in your desire color (in accordance with RAL color table) make the "Easy Butler" the Unikat.



NEW MODULES TO CONFIGURE:

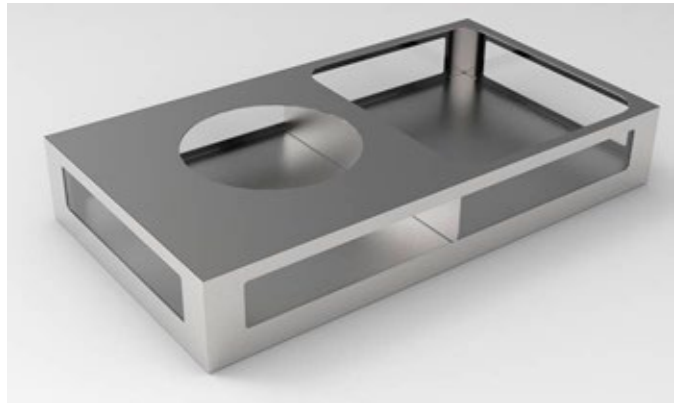
- The sheet metal parts of all modules are made of stainless steel 1.4301.
- The inserted panes are made of 5mm ESG (single-pane safety glass).
- The bottom of the VIP, Multitalent, Belle-Art, tubs is made of sandwich construction for stiffening.
- The adhesive-sealant used is a 1k silicone sealant with special suitability in the food and drinking water sector.
- dimensions 900 mm x 150 mm x 495 mm (WxHxD)
- Champagne cooler made of stainless steel Ø 40 cm H 28cm



VIP- Tub & Champagne Cooler

18,5 Kg

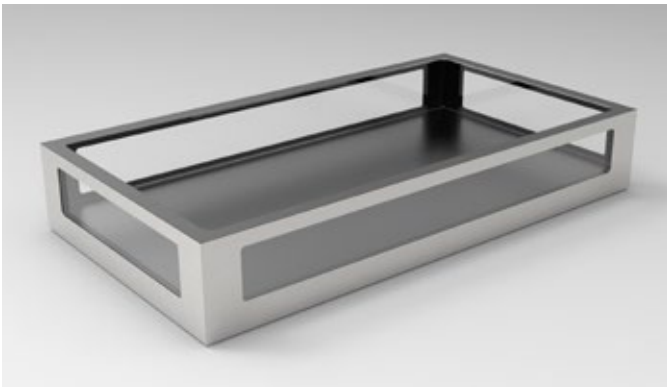
article no. 470010



VIP- tub without champagne cooler

18,5Kg

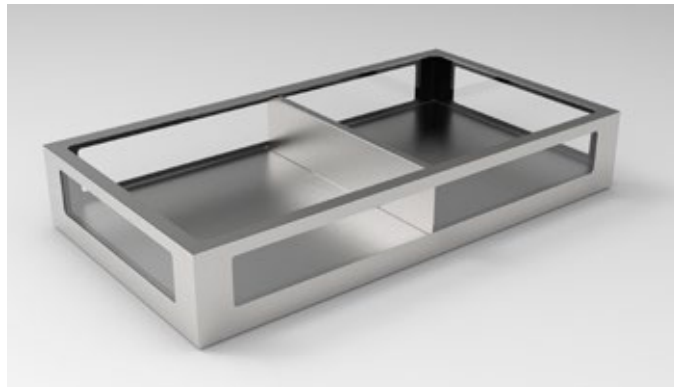
article no. 470005



Belle-Art tub

16,5 Kg

article no. 470020



Multitalent tub

16,5 Kg

article no. 470030

Special thermo box (Ice cream version)

for cooling and holding of ice cream containers

- including 4 eutectic plates, without GN containers
- Stainless steel support frame for holding ice cream containers
- Box with stainless steel cladding

755 mm x 340 mm x 465 mm (WxHxD) 12Kg

article no. 470040



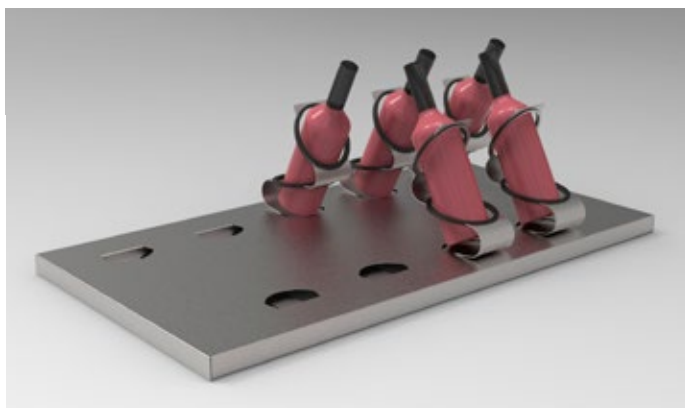
NEW MODULES TO CONFIGURE:

- The sheet metal parts of all modules are made of stainless steel 1.4301.
- The bottom of the Bea & Jass tub is made of sandwich construction for stiffening.
- The adhesive-sealant used is a 1k silicone sealant with special suitability in the food and drinking water sector.
- Removable buffet plates, laminate 8mm thick, rust look, break resistant, scratch resistant, dishwasher safe, antistatic.
- The wine presenter and wine bottle holders are made of stainless steel 1.4301.



Bea & Jass - tub

900 mm x 65 mm x 495 mm (WxHxD) 14,6 Kg
article no. 470050



Vis-a-Vis Wine bottle presenter with stainless steel bottle holders

900 mm x 65 mm x 495 mm (WxHxD) 12 Kg
article no. 470060

